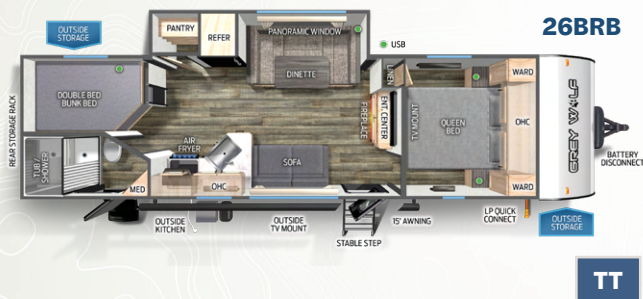
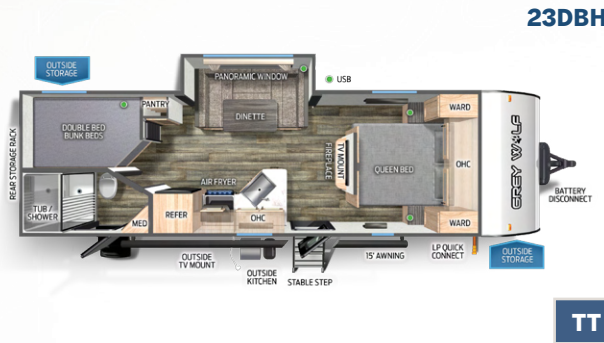
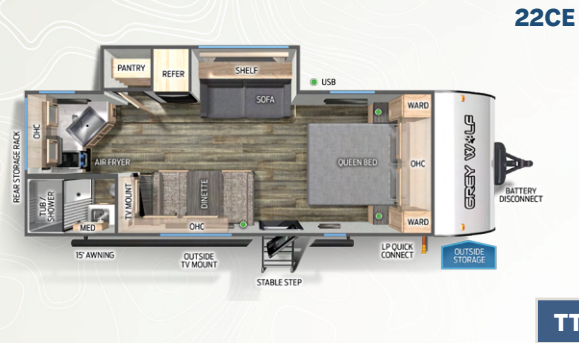
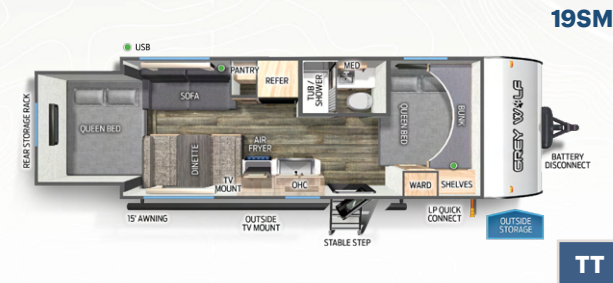


GREY WOLF



RUN WITH THE PACK.

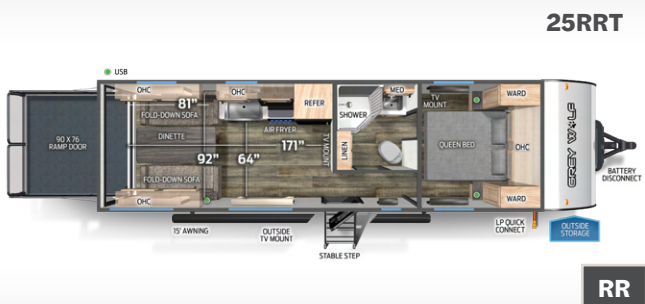
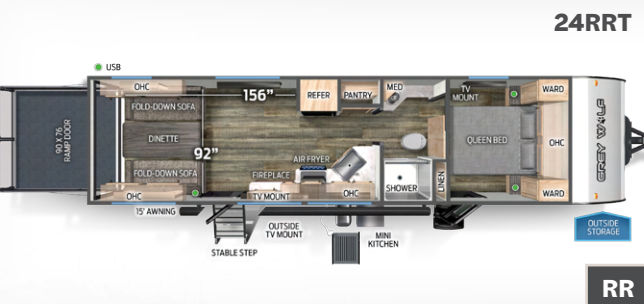
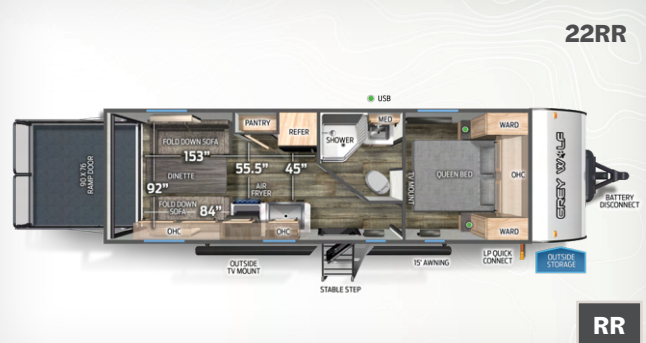
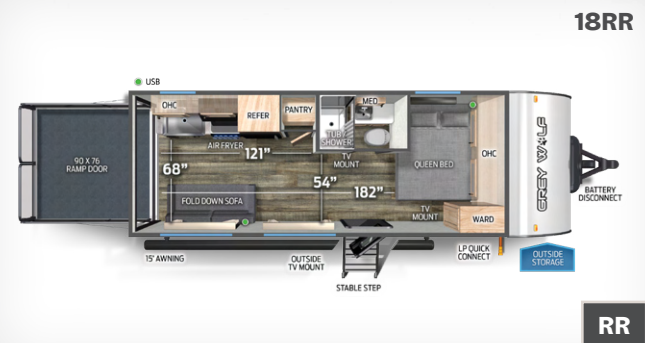
TRAVEL TRAILERS



GREY WOLF

TRAVEL TRAILERS & REAR RAMP TRAILERS

[illegible]



GREY WOLF

Limited Package

- 12V, High Efficiency, 10 Cubic Foot Residential Refrigerator with Travel Lock
- Chef Select Black Stainless Steel Kitchen Suite Package
- Cherokee Back up Camera System
- Cherokee Exclusive Stable Step with Oversized Landing
- External LED Strip Lighting
- External Porch Scare Light
- Interior & Exterior Ghost Lights
- Fireplace (not available on all models)
- Full Hybrid Tub with Shower Surround
- Kitchen Skylight W/ Shade (N/A on FW)
- Exclusive Solar Thermo Controlled Reflective Tinted Safety Glass Windows
- LED Interior Lights

- LED Strip Lighting (Not available on all models)
- Light Filtering Sheer Shading Premium Blackout Zebra Blinds
- Matte Black Heavy Duty Spring Assisted Kitchen Faucet Sprayer
- Power Gear™ Frame Technology and Space Saver Rail Design
- Premium Bedding Ensemble and Comforter
- Premium Wheel Package
- Ramp Door Patio System (Available on Toyhauler Models Only)
- Real Blackout Glass, Safety Slam, Friction Hinge Entry Door with Window and Shade Prep
- Residential Farm Style Black Stainless Steel Sink
- Seamless Roofing Membrane with Heat Reflectivity
- Super Kitchen
- Tire Pressure Monitors
- Spare Tire
- Supersized, Central Air Conditioning Unit (15,000 BTU)

- with Quick Cool Air Dump Feature
- Upgraded Sofa with Bolster Arm Rests
- USB Charging Stations
- Removable Gaucho Brackets (RR Models Only)
- USB Charging Stations
- Ladder Prep

Base Camp Package

- Black Waste Tank Flush out Kit
- Armored Underbelly Tank Enclosure
- Flip Down Travel Rack (Not available on Toyhauler Models)
- Large Exterior Folding Assist Grab Handle
- Outside Shower with Hot and Cold Water
- Outside TV Bracket and Hook Ups
- Power Awning

- RV Grill Quick Connect

Campfire Package

- 40" Dinette Drawers x 2 on models with slideouts
- Tankless Water Heater
- Bluetooth Radio
- Cabinets in Bedroom
- High Output Attic Fan in Bathroom
- Air Fryer
- Roof Mounted Ducted Air Conditioner (Not available on units under 26')
- Skylight over Shower
- Solid Bedroom Doors (Not available on all models)



PRE-DELIVERY INSPECTION FACILITY

20,000 square feet of quality assurance. The bare essentials for a premium product. This state-of-the-art facility gives immediate daily feedback to production for quality assurance in every unit built.



Learn More
Scan this barcode using a QR Reader on your smart phone to learn more about Forest River.



A Berkshire Hathaway company



www.forestriverfrog.com

CUSTOMER SATISFACTION



www.ForestRiverBuyLocal.com

YOUR GREY WOLF DEALER

24/7 EMERGENCY ROADSIDE ASSISTANCE WITH VEHICLE PURCHASE*

TOWING
JUMP-STARTS
TIRE CHANGES
FLUID DELIVERY
LOCKOUT
SERVICE

WINCH-OUT
MOBILE MECHANIC
TECHNICAL
SUPPORT
DEALER LOCATOR
SERVICES



*VALID FOR 1 YEAR FROM DATE OF PURCHASE

Specification Definitions

UVW (Unloaded Vehicle Weight)* - is the typical weight of the unit as manufactured at the factory. It includes all weight at the unit's axle(s) and tongue or pin and LP Gas. The UVW does not include cargo, fresh potable water, additional optional equipment or dealer installed accessories.

*Estimated average based on standard build optional equipment.

CCC (Cargo Carrying Capacity)** - is the amount of weight available for fresh potable water, cargo, additional optional equipment and accessories. CCC is equal to GVWR minus UVW. Available CCC should accommodate fresh potable water

(8.3 lbs per gallon). Before filling the fresh water tank, empty the black and gray tanks to provide for more cargo capacity.

**Estimated average based on standard build optional equipment

Each Forest River RV is weighed at the manufacturing facility prior to shipping. A label identifying the unloaded vehicle weight of the actual unit and the cargo carrying capacity is applied to every Forest River RV prior to leaving our facilities.

The load capacity of your unit is designated by weight, not by volume, so you cannot necessarily use all available space when loading your unit.

All information contained in this brochure is believed to be accurate at the time of publication. However, during the model year, it may be necessary to make revisions and Forest River, Inc., reserves the right to make all such changes without notice, including prices, colors, materials, equipment and specifications as well as the addition of new models and the discontinuance of models shown in this brochure. Therefore, please consult with your Forest River, Inc., dealer and confirm the existence of any materials, design or specifications that are material to your purchase decision. Litho. U.S.A. FOR 2288 W-2023.12.01